

ST. PATRICK REGIONAL SECONDARY

INFORMATION BOOKLET

2021 - 2022



WWW.STPATS.BC.CA

115 EAST 11TH AVENUE VANCOUVER



Jesus Is the Reason For Our School



Dear Prospective Student and Parents,

We are indeed honoured that you are considering St. Patrick Regional Secondary School as the high school of choice for your son or daughter. We are proud to be an institution steeped in tradition and dedicated to “*Excellence*”. As you walk our halls, you can sense the strength of many decades of service to the ministry of Catholic education in the Archdiocese of Vancouver.

This Information Booklet is provided in order that you will know fully, before applying, our structure, policies and procedures. I specifically ask that you study in detail our “*Statement of Commitment*” which outlines our parental commitment to Catholic education. Registration of your son/daughter requires a signed affirmation of this statement and is to be signed by both parents, if applicable, as well as the student.

In addition to this booklet we have included a package of registration forms that you are to complete and return to the school. Please read carefully all the information contained within, especially our *Admissions Policy and Family Statement of Commitment*.

If you have any questions regarding either of these items, please feel free to make an appointment through the school to discuss your concerns.

*In Christ,
Rev. James Hughes*



School Philosophy



PHILOSOPHY OF ST. PATRICK REGIONAL SECONDARY SCHOOL

“Jesus is the Reason for Our School”

We are the children of God made in God’s image. We are pilgrims learning and teaching in St. Patrick Regional Secondary School. Together we will work to serve God and our fellow human beings. In cooperation with the parents and students we will foster a climate of understanding, caring and learning that promotes an environment of safety, acceptance and respect for all students. This philosophy will be applied so that the students may grow in their totality and will be prepared to accept and live their Christian commitment to God and the world.



School Structure



Policies for C.I.S.V.A. schools are written in the C.I.S.V.A. Policy Book that is available at the school and online at www.cisva.bc.ca. St. Patrick Regional Secondary School is a Catholic Independent School of the Vancouver Archdiocese (C.I.S.V.A.). It serves 23 parishes in the municipalities of Vancouver, Richmond and South Delta. The pastors of our designated parishes elect three priests who serve as representatives to the Regional Education Committee and one of them, Fr. James Hughes, is selected as the Archbishop’s Representative to the school. In addition to these priests, the Regional Education Committee is composed of representatives from each designated parish, elected by that parish.

SPIRITUAL AND RELIGIOUS EDUCATION

St. Patrick Regional Secondary School is deeply committed to the spiritual growth of our students and of all people associated with the school. We are blessed to have a chapel in the centre of the school encouraging frequent visits to the Blessed Sacrament. Our Chaplain, our Campus Ministers and team of Peer Ministers are integral to our Religious Education program. All students participate in school liturgies and class retreats as well as an approved course of religious studies. Religious Education is stressed to the extent that every student must pass Christian Education in order to be promoted to the next grade. The celebration of the Eucharist, the Sacrament of Reconciliation, as well as daily prayer, are given a very high priority in our yearly planning.

ACADEMICS

St. Patrick Regional Secondary Shool offers a full academic program designed to prepare students for post-secondary education. Our school utilizes its Integrated Learning Resource Centre to offer programs for Learning Assistance and Special Needs. We are fully committed to meeting the needs of individual students. Our academic program, while consisting of all the core subjects as per Ministry of Education guidelines, also offers electives in Music, Information Technology, Art, Home Economics, Film, Drama and Business Education. We are, as well, proud of the work of three peer groups within the school: Peer Ministers, Peer Counselors and Peer Tutors.



Application Fee Schedule

GRADE 8 TO 12	INTERNATIONAL STUDENTS
\$100 due when application is submitted.	\$125 due when application is submitted.

These fees are non-refundable.

New rates for tuition fees can be found on our website. Tuition fees may be paid in full or paid by automatic debt to your bank account on the 1st of each month.



DEFINITIONS FOR TUITION FEES

Category 1 – Regional Parishioner

- Parishioner of one of our regional parishes
- Authorized and supported by your pastor to attend this school
(Pastor has signed on the first line of your Pastor Authorization Form)

Category 2 – Out of Region Parishioner

- A parishioner of a parish outside our regional parish district
- Authorized and supported by your own pastor to attend this school
(Pastor has signed on the first line of your Pastor Authorization Form)

Category 3 – Parishioner not supported by Parish

Can be one of the following:

- A parishioner of one of our regional parishes but not supported by your pastor
(Pastor has signed on the first line of your Pastor Authorization Form)
- A parishioner of a parish not part of our regional parish district
(Pastor has signed on the first line of your Pastor Authorization Form)

Category 4 – Non-Catholic

- You are a non-Catholic and have signed on the last line of your Pastor Authorization Form

Category 5 – International/Visa Student

- This category is for families not eligible for the Government grant

The above fees are dependent on the school receiving the per student provincial operation grant from the Ministry of Education. To qualify for this grant the student must attend at least 600 hours of instruction between July 1st to May 15th; and the parent or guardian must be a Canadian citizen or permanent resident. In the event that the student does not qualify for this grant, an amount equal to the grant (approximately \$3500.00) will be automatically added to the first payment.



Clubs

	PURPOSE	WHEN	WHO
STUDENT COUNCIL	Offers the opportunity for leadership and service to the school community.	All Year	Grade 12
YEARBOOK	Creates our annual Yearbook. <i>(separate from the yearbook course)</i>	All Year	All Grades By Application
PEER TUTORS	Provides talented students with the opportunity to share their skills with students who require additional assistance in many academic areas.	All Year	Grade 10-12's Must be academically advanced
PEER COUNSELORS	Provides selected students with the opportunity to learn the skills required to assist peers in need.	All Year	Grades 11 and 12 By Application
PEER MINISTERS	Provides leadership opportunities in promoting the spiritual life of our school.	All Year	Junior and Senior programs By application
VALUE PROJECT/ RESPECT FOR LIFE CLUB	Provides the opportunity to promote and support many pro-life projects in the school and greater community.	All Year	All Grades By Registration
PHOTOGRAPHY	Provides the opportunity to learn and enhance photography skills	All Year	All Grades By Registration
PEERS CLUB	Provides the opportunity for students to gather and practice community building through social activities.	All Year	All Grades By Registration
DANCE SQUAD	Provides dancers the opportunity to perform at a variety of school events and competitions.	Fall- Winter	Grades 8-12 By Audition
SCHOOL PLAY	Offers aspiring actors with the opportunity to be involved in our annual school play.	Winter - Spring	Grades 8-12 By Audition
MODEL UN (STPMUN)	This is a student led initiative. We train for and attend MUN conferences in Whistler and in the Lower Mainland. We explore simulated world diplomacy that inspires our delegates to become more aware, more educated, and more thoughtful global citizens in an increasingly complex world.	All Year	Grades 8-12



Clubs

ANNOUNCEMENT CLUB	Provides the opportunity to learn how to read school announcements	All Year	Grade 11 & 12 By Audition
GRAD COMMITTEE	Provides Grade 12 students with leadership opportunities related to organizing Graduation events	All Year	Grade 12's only By Registration
SACRISTANS	Provides the opportunity to become involved in organizing school Liturgies	All Year	Grades 8-12 By Registration
CELTIC ARTS WEEK COMMITTEE	Provides opportunities to lead a school-wide initiative	All Year	Grade 12
POETRY CLUB	provides students with opportunities to create, share, and present their poetry and others' work in a variety of contexts, environments, and for diverse purposes.	All Year	Grades 8-12
GRADU8'S	Provides a mentorship program for Grade 8 students	All Year	Grade 12
SCOREKEEPERS	Provides students the opportunity to score-keep volleyball and basketball games	All Year	Grades 8-12
JAPANESE EXCHANGE	Provides the opportunity to experience Japanese life and culture while visiting our sister school in Maizuru Japan	Every 2 nd Year	Grades 10-12
INTERNATIONAL CLUB	Provides opportunities to learn about other cultures by introducing students from a different cultures to one another and participating in a variety of events	All Year	Grades 8-12 By Registration
SOCIAL JUSTICE CLUB	Educates students about Catholic Social teaching and provides opportunities to serve the local and global communities and act as stewards of the God's creation through a variety of activities and fundraising events.	All Year	All Grades By Registration



Spiritual

PHILOSOPHY	“Jesus Christ is the Reason for our School”		We are the children of God made in God’s image. We are pilgrims learning and teaching in St. Patrick Regional Secondary School. Together we will work to serve God and our fellow human beings. In cooperation with the parents and students we will foster a climate of understanding, caring and learning that promotes an environment of safety, acceptance and respect for all students. This philosophy will be applied so that the students may grow in their totality and will be prepared to accept and live their Christian commitment to God and the world.
MASS	The importance of Holy Mass is recognized at St. Patrick Regional Secondary both as a way of increasing the faith of the individual and helping the building of Christian community. Throughout the school year, mass is offered weekly during the school timetable for those who wish to attend and monthly to the whole school. The entire school community is encouraged to attend and participate in weekly liturgy and daily prayer.		
RETREATS	Grade 8:	A grade level retreat facilitated by the Senior Peer Ministers and Peer Counselors for all grade 8 students. The focus of the retreat invites students to consider their Christian journey and explore their inherent gifts and developing talents.	
	Grades 9, 10 and 11:	These retreats are organized by the Campus Ministry department with support from the Senior Peer Ministers - "class leaders" and/or outside evangelization teams such as NET. The retreats complement the grade level curriculum while supporting the students’ spiritual development.	
PEER MINISTRY	ENCOUNTER:	Grade 12 students are invited to join other adult participants on a three day retreat that invites candidates to carefully explore and consider the joys and struggles in their past and to honor the events and people at the forefront of their current experiences. This adult model retreat challenges candidates to consider their experiences in light of their faith journey and offers participants the opportunity to recommit themselves to Christ.	
		The Junior and Senior Peer Ministry Programs provide students with opportunities to develop spiritual grounding and ministerial skills. Through communal prayer and pastoral outreach within the school community and the archdiocese, the program seeks to enhance and transform the relationships among students, their families, staff and faculty, and the larger community. To help prepare the peer ministers for pastoral and spiritual leadership, students spend considerable time developing their prayer lives, preparing prayer services, organizing and participating in retreats and developing skills that encourage dialogue, reflection and interaction.	
LITURGICAL MINISTRIES	Sacristans	Students who volunteer to be trained as sacristans work in teams to prepare the altar for the weekly Eucharistic Liturgies.	
	Altar Servers	Altar servers offer their services in this ministry to enhance Eucharistic Liturgies at our weekly and monthly school masses.	
	Music Ministry	Students who volunteer to be singers and/or musicians meet weekly to select the repertoire, practice, and lead the congregation in song for weekly masses.	
	Chamber Choir	Students in the Chamber Choir select repertoire and lead the congregation in song for monthly masses.	



Curriculum

	Grade 8	Grade 9	Graduation Program Grade 10	Graduation Program Grade 11	Graduation Program Grade 12
Overview	7 Mandatory 4 Electives <ul style="list-style-type: none">one elective block for a 2nd Languageone elective block for three electives	7 Mandatory 2 Electives (two elective blocks)	7 Mandatory 2 Electives (two elective blocks)	7 Mandatory 2 Electives Elective choices are decided on the basis of the student submitting a “ Graduation Plan ” which meets Ministry requirements.	3 Mandatory 5 Electives
Mandatory	<ul style="list-style-type: none">Christian EducationEnglishMathematicsSocial StudiesSciencePhysical and Health EducationHealth and Career Planning	<ul style="list-style-type: none">Christian EducationEnglishMathematicsSocial StudiesSciencePhysical and Health EducationHealth and Career Planning	<ul style="list-style-type: none">Christian EducationEnglishMathematicsSocial StudiesSciencePhysical EducationCareer and Life Education	<ul style="list-style-type: none">Christian Ed.English1 MathSocials1 Science1 Fine art or Applied Skills	<ul style="list-style-type: none">Christian EdEnglishCareer Life Connections (w/ Career Capstone)
Electives	1 st Elective: French 2 nd Elective: Art, Design Technology, Choir, Drama, and Career Education. (Quarter schedule) Learning Assistance	1 st Elective: French 2 nd Elective: Choir and Online Career Education (full year) OR Art, Drama, Career Education (Trimester schedule) Learning Assistance	1 st Elective: French or Spanish 2 nd Elective: Choir and Online Career Education (full year) OR Art & Career Life Education (1/2 year schedule) OR Drama & Career Life Education (1/2 year schedule) Learning Assistance	Life Sciences 11 Chem. 11, 12 Physics 11, 12 Philosophy 11 Psychology 11 Pre-Calc. 11, 12 Found. Ma 11, 12 W/PL Ma. 11 Spanish 11, 12 French 11, 12 Yearbook 11 Foods 11, 12 Active Living 11, 12 Art 11, 12 Visual Arts Media Tec 11 Science for Citizens 11	Geography 12 History 12 English Lit 12 Writing 12 Calculus 12 Law 12 Phys. Ed. 12 Yearbook 12 Entrepreneurship 12 Choir 11,12 Info. Tech. 11, 12 Chamber Choir 11, 12 Anatomy & Physiology 12 Economics 12



Student Services

	Personal Counselling	Academic Advisors	Post Secondary Planning	Learning Resource Centre	Course Selection
Overview	St. Patrick’s belief that students require services above and beyond the classroom is illustrated by the number of people dedicated to supplying student services. The administration, advisors, counselors and special education teachers work together with the clear, collaborative vision that students need adult advocacy in order to achieve full academic potential as graduates, to make appropriate post–secondary and career decisions and to understand the importance of working with and for a community.				
Who	Personal Counsellors Ms. E. Rezai Ms. Izabela Zakrewska Peer Counsellors	Academic Advisors Junior 8 & 9 Mr. D. Wicks (Mr. Lance Hurtubise) Senior 10 & 11 Ms. V. Anderson (Ms. M. Ignacio)	Post Secondary Planning Mr. Paul Stiu Planning Work Experience Mr. Jim Au	Learning Support Services Ms. K. Mah Mr. D. Marino Teacher Assistants Peer Tutors Mrs. V. Anderson	Vice Principals Ms. M. Ignacio Mr. L. Hurtubise
Program	To provide all students who require personal counseling with support or to liaise with out side professionals to help deliver support	To provide all students with academic advise, track academic progress and help classroom teachers structure learning plans for students	To assist and guide senior students with the development of a graduation and a post secondary transition plans	To give learning assistance, and develop IEP’s for students who have been identified as LAC candidate or require enrichment	To provide all students with course selection advise with the intent of placing students into required courses and courses where individuals will experience the most success



Athletics

	Grade 8 Bantam	Grade 9 Juvenile	Grade 9-10 Junior	Grades 10-12 Senior
Ultimate Boys & Girls	<ul style="list-style-type: none">One Junior team for grades 8 through 10Played in the Spring			<ul style="list-style-type: none">One Senior team for grades 10 through 12Played in the Spring
Soccer Girls	<ul style="list-style-type: none">One girls team for grades 8 through 12Played in the Spring			
Volleyball Boys & Girls	<ul style="list-style-type: none">Played in the Fall15 Girls per team8-10 Boys per teamIndependent Schools League	<ul style="list-style-type: none">Played in the FallIndependent Schools LeagueGrade 9’s play on a combined grade 9-10 Team	<ul style="list-style-type: none">Played in the Fall12-15 per teamIndependent Schools League	<ul style="list-style-type: none">Played in the Fall12 per teamIndependent Schools League4 Time Provincial Champions
Basketball Boys & Girls	<ul style="list-style-type: none">Played in Winter15 per Team	<ul style="list-style-type: none">Played in the WinterGrade 9’s play on a combined Grade 9-10 TeamMixed Schedule with Public and Independent schools	<ul style="list-style-type: none">Played in Winter12 per TeamMixed Schedule with Public and Independent schools	<ul style="list-style-type: none">Played in the WinterMixed Schedule with Public and Independent schoolsSr. Boys 3 Time Provincial Champions
Wrestling Boys & Girls	<ul style="list-style-type: none">Played in the WinterOpen to all students grades 8-12Year End Competition separated by Weight Classes only not by grade4 Time Provincial Champions			
Track and Field Boys and Girls	<ul style="list-style-type: none">Played in the SpringCombined Boys and Girls TeamStudents compete against students in their own grade levelAt the Provincials there is no distinction between grade levelsAll meets are held in conjunction with other Independent schools			



Academic Expectations



At St. Patrick Regional Secondary School we are dedicated to the promotion of academic excellence for all our students. Academic success at our school is rooted in our tradition of strong work habits and a dedication to learning. It is expected that upon graduation our students are well prepared to transition to life after high school.

The vast majority of our awards and scholarships are presented to students who have displayed a strong work ethic, an excellence in learning and in service to the community throughout their years at our school.

SCHOLARSHIPS AND AWARDS

St. Patrick Regional Secondary School community is known as a supportive network of teachers, parents, pastors, and alumni who work together to create opportunities for its students. These opportunities are possible because there is a tradition of and indeed a commitment to being “ready and willing”. Our school community is blessed with many individuals who are ready and certainly dedicated to using their gifts and talents in their pursuit of excellence. We recognize many deserving students each year with the growing number of awards and scholarships; we are proud to affirm our students and assist them in their post-secondary endeavors. St. Patrick Regional Secondary School awards fifty-seven internal scholarships to students from grade eight to twelve and graduating students are awarded a large number of external awards from post secondary institutions and community organizations.

For a complete list and description of all scholarships and awards please refer to our website at WWW.STPAT.S.BC.CA under the “Student Information” section.



Specialized Programs



St. Patrick Regional Secondary School recognizes that “the one size fits all model” does not meet the needs of all our students. We appreciate that we have students with varied gifts and talents, students with individual and special needs and students who are new to our country. It is our goal to support all learners regardless of gifts or needs. We have established three programs which attempt to support individual needs.

The St. Patrick **HIGH PERFORMANCE PROGRAM** is a specialized program intended for learners who are competing at the provincial, national and/or international level in activities not associated with our school. Students in this program will be supported with individual schedules and granted equivalency credits when appropriate.



The St. Patrick **INTERNATIONAL PROGRAM** is designed to support international students registered at St. Patrick Regional Secondary School by providing them with appropriate English as a Second Language instruction and helping them integrate into daily life in the school and in the greater community.



Regional Parishes and Pastors

Diocesan Policy

REGIONAL PARISH SUBSIDY TO THE SCHOOL

All 23 parishes that St. Patrick Regional Secondary School serves must contribute financially to support the school’s operational costs. The amount of the contribution varies for each of the supporting parishes. To be fair to each parish, the amount given to the school is calculated using a formula that takes into account the number of students attending the regional school from that parish.

In order for your child to be considered a member of a particular parish, your family must:

- Be registered in that parish
- Regularly attend Mass at that parish
- Use Sunday envelopes (no amount specified) from that parish on a regular basis
- Participate in the work activities required of you by that parish

St. Patrick Regional is a Secondary School serving the students of parishes listed below. All students applying from these parishes must obtain the signature of their pastor, also listed below. Parish subsidies are paid directly to the school and not to the family.

VANCOUVER

Holy Rosary	Rev. Stanley Galvan	604-682-6774
Blessed Sacrament	Rev. Miguel Segura Blay	604-874-3636
Guardian Angels	Rev. John Alex Pinto, OCD	604-684-5775
Holy Family	Rev. Daniel Geddes	604-255-5026
Holy Name of Jesus	Rev. Larry Holland	604-261-9393
Immaculate Conception	Rev. Paul Smith, OFM	604-224-5678
Our Lady of Fatima	Rev. Rosemond Sylvestre, CS	604-879-0729
Our Lady of Perpetual Help	Rev. Babu Mathew, CSsR	604-224-4344
St. Andrew	Rev. Joseph Hieu Nguyen,OCD	604-327-2824
St. Anthony of Padua	Rev. Justin Huang	604-266-6131
St. Augustine	Rev. Andrzej Stendzina, OMI	604-736-4455
St. Casimir	Rev. Tomasz Krzesik, OMI	604-876-3194
St. Francis Xavier	Rev. Josepg Chi Hung Ly, CSJP	604-254-2727
St. Mark	Rev. Robert Allore, SJ	604-822-4463
St. John the Apostle	Rev. Anthony Ho	604-266-8800
St. Joseph	Rev. Martin Nguyen Thanh Tuyen, OP	604-876-7826
St. Patrick	Rev. James Hughes	604-874-7818
Sts. Peter and Paul	Rev. Frank Landry	604-261-3535

RICHMOND

Canadian Martyrs	Rev. Richard Au	604-272-5563
St. Joseph the Worker	Rev. Pierre Ducharme, OFM	604-277-8353
St. Monica	Rev. Robert Wong, SJ	604-278-0844
St. Paul	Rev. Tom Smith	604-277-3213

DELTA

Sacred Heart	Rev. Francis Galvan, OSA	604-946-4522
--------------	--------------------------	--------------



Admission Policy

St. Patrick Regional Secondary School is a Roman Catholic High School and is a member of the Catholic Independent Schools of Vancouver Archdiocese. The school is established to serve the educational needs of 23 designated parishes, the general Catholic community of Greater Vancouver and other students who share our goals and values.

Applications for enrollment of new grade eight students and returning students, must be received by the school office by the annual deadline together with complete documentation and fees in accordance with current school practice.

Admission to the school will be determined by a Committee of the Archbishop’s Representative and the pastors of the 23 designated parishes in accordance with their quotas and advice from the administration. In general, acceptance of students who meet the application requirements will be prioritized on the following basis:

PRIORITIES FOR ACCEPTANCE TO ST. PATRICK REGIONAL SECONDARY SCHOOL

1. Children presently enrolled in the school if they and their families meet the expectations of the school.
2. Siblings of children already in the school, whose families are practicing Catholics active in one of the parishes of the region.
3. Children whose families are practicing Catholics active in one of the parishes of the region. In cases where a parish is unable to fill its allocated seats with practicing Catholics active in their parish, priority for these seats shall be given to practicing Catholics active in other regional parishes.
4. Siblings of children already in the school, whose families are practicing Catholics active in a parish from outside the region.
5. Children whose families are practicing Catholics active in a parish from outside the region.
6. Children whose families are either not practicing Catholics or not active in their parishes.

Students may be refused admission or granted conditional admission based on previous academic achievement, non-payment or late payment of fees, deportment, adequacy of facilities, availability of programs and religious grounds. The definition of what constitutes being a member of a regional parish is defined on the previous pages.

POLICY REGARDING LATE APPLICATIONS AND RE-REGISTRATION

1. Any application or re-registration received after the deadline must be accompanied by a late application fee of \$100.00.
2. If any application is received after the deadline there is no guarantee that the student will be accepted, even if the student applicant is a sibling of a current student.

Please note: Fees are non-refundable.



Protecting Your Privacy

PICTURE AND PRINT RELEASE

The School's Commitment To You

Safeguarding your confidentiality and protecting your personal information is a fundamental concern of St. Patrick Regional Secondary School. The school is committed to meeting or exceeding the privacy standards established by the **BC Personal Information Protection Act (PIPA).**

Part of this commitment includes obtaining your informed consent when you give the school information. During the school year, you may be asked to sign a variety of consent forms. Please be sure to read these documents thoroughly before signing them. If you have any questions, please be sure to call the school. In order to simplify some of these items, we have included a global consent form on the application. Thank you for reading and completing this form.

In addition, the school has developed a personal information privacy policy for students, parents, employees and volunteers. A copy of this policy is available at the school office. This personal information privacy policy is intended to explain to you the current legislation which is designed to protect your privacy, to regulate the use and collection of information, and to state the steps the school has taken to ensure your personal and financial information is handled appropriately and securely. The school may add, modify or remove portions of this policy when it is considered appropriate to do so. You may ask for the most recent update of this policy at the school office. Questions, concerns, and complaints about privacy, confidentiality and information handling of the school may be addressed to the school's Privacy Manager by calling the school office. If necessary, you will be referred to use the school's complaint procedure and appeals policies.

St. Patrick Regional Secondary School strives to deliver the best educational experience for its students and support community of parents, teachers, etc. Technology plays a critical role in delivering these experiences. As part of the school's commitment to excellence, the school uses many of the best technology solutions available in and outside of the classroom. Many of these technology solutions are hosted by international third party providers. These providers offer vastly superior security and availability than the school would be able to provide by hosting IT solutions itself. Canadian privacy legislations, provincial and national, require the school to inform its community when services are hosted by such third party providers. At St. Patrick Regional Secondary School we are committed to providing our community with the highest levels of technology, information security, and privacy. Our use of third party service providers, carefully selected as leaders in their areas, is furtherance of this commitment to excellence.



Statement of Family Commitment

Rationale

“Motivated by a Christ-centered vision of humanity and human history, our school promotes the formation of the whole person. Such formation embraces not only intellectual, but also physical, emotional, moral and spiritual dimensions of human growth. Intellect, emotions, creative ability and cultural heritage have a place in the life of the school. Human knowledge and skills are recognized as precious in themselves, but find their deepest meaning in God's plan for creation.”

From PHILOSOPHY OF EDUCATION FOR CATHOLIC SCHOOLS IN THE PROVINCE OF B.C. by Catholic Bishops of B.C.

PARENT AND STUDENT COMMITMENT

Admission to St. Patrick Regional Secondary School requires that the family make a commitment to the values and ideals stated above. A happy, productive and successful Catholic education is, most often, a result of the school and home working together. The following is a list of expectations that lead to a successful high school experience.

- All students who enroll in St. Patrick Regional Secondary School accept a serious obligation to explore their attitudes and values in a Catholic context. Every student is required to participate in: religious instruction, sacraments, prayer, a retreat, and a service program. Parents/Guardians also are expected to support the Religious Education program and to participate in it as required.
- Regular school attendance and full participation in all aspects of the academic program of the school are required of every student. Each student is expected to develop his/her potential toward academic excellence.
- Students are encouraged to participate in extra-curricular activities.
- Each family is expected to support and participate in the school fundraising activities. This means that each family shares in the responsibility of educating the students of St. Patrick Regional Secondary School.
- Each student is expected to know and follow the school policies on behaviour.
- Parents/Guardians are expected to know and support school policies.
- Parents/Guardians are expected to attend at least one orientation session which will focus on the philosophy and goals of St. Patrick Regional Secondary School.
- Parents/Guardians agree to accept the responsibility for the cost of tuition, class fees, and supplies. Non-payment of fees will result in the family being referred to our Arrears Committee. All students who enroll at St. Patrick Regional Secondary School accept a serious obligation to explore other school activities. Parents, as well, are expected to support and participate in the parent participation program and school fundraising activities.

EMERGENCY/DISASTER

For the safety and well-being of students, the school may implement a “controlled release” in the event of an emergency or disaster. The school's administration may release the student if the situation is deemed to be safe and the student is considered not to be at risk.



Parent Participation Program



The Parent Participation Program plays an integral part in the operation of St. Patrick Regional Secondary School. It is because of this important program that we are able to generate additional income as well as keeping the cost of tuition down. A secondary aim of the program is to foster a spirit of community among families working to create a better school. Preference for acceptance to St. Patrick Regional Secondary School is granted to those families who choose to work in this Program.

When parents have students in both St. Patrick Regional Secondary School and one of the Regional Elementary Schools, they should understand that the Participation Programs are considered independent of each other, meaning that the commitments to both schools must be fulfilled. Once all school parent participation areas have been filled, participation in one of our feeder parishes may be considered. The general requirement is a minimum of 40 hours of service per year. However, actual time commitment varies per area. The participation areas are described below. Please ensure that you have the skills necessary to do the job.

Parent Volunteers: It should be noted that the Participation Program is a separate issue from that of volunteering time as a parent whose child attends this school. In that same spirit of fostering community among families and in supporting the school, it is an expectation that parents at our school will take part in the various school activities, including fundraising.

Reduced Participation is reserved for those who, by reason of special circumstances, cannot participate in the above categories. Each case will be judged individually by the Education Committee resulting in a personalized participation program. Therefore, applicants are required to submit a detailed written request at the time of application. All information will be treated in strictest confidence. *Note:* This section is reserved for cases of very serious illness or other special circumstances and replaces the previous special exemption category.



Participation Categories

Student Food Services

Assisting in the preparation of lunches for the students in our cafeteria as well as lunch supervision. The commitment is for two hours, one day per week, for the whole school year (or possibly one-half of the year if we receive enough qualified helpers). Skills Required: Food preparation, cleaning and related duties, good communication in English, etc.

Somerville Learning Centre (SLC)

Assisting in the checking in and checking out of library materials, shelving books, keeping the library in order, and supervising and assisting students when necessary. Working with computers is required. Our SLC is not available to students without the parent volunteer present. The commitment is for three and a quarter hours, one day per week, either for one-half of the school year (or possibly one-third of the school year if we receive enough qualified helpers). Skills Required: Good communication in English and basic computer skills.

Fundraising Planning Committee

Work with a team in the planning of various major fundraising events throughout the year. It involves attending meetings to plan all the details and logistics for events, assisting with coordination and execution of various responsibilities to make the fundraising events successful. Skills required: Team work, open mind, enthusiasm, networking skills, computer skills, vision, and be able to lead a team for an event.

Fundraising Crew For Events

Work at various fundraising events to make them a great success: Walkathon, bottle drives, Christmas tree chipping, raffle tickets, etc. Please visit the Parents Participation portal prior to the start of the school year for descriptions of responsibilities and to sign up.

Special Events Crew

Work at different fundraising or alumni events to help with set-up, working at the event, and/or take down, and clean-up. You will be assigned to several events during the year (usually on a weekend or on a weekday evening) in order to make up the 40 hours required for the year. Skills Required: Ability to work on a team, some lifting of tables and chairs, decorating, food preparation, cleaning, selling tickets, being a host(ess), serving, kitchen assistance, or cashiering. Other skills that would helpful are printing services, computer tracking, bartending, and providing services such as a D.J.

Building Maintenance

Skilled trades people to participate on designated Saturdays for a full day. Some individuals with special skills may be required at different times when required.

School Cleaning Team

A team of people work on designated Saturdays to do special cleaning around the school property, usually for a full day.

Traffic Patrol, Control and Supervision

To assist for one hour with traffic control at dismissal time, one day per week for the whole school year.

Regional Education Committee

An elected or appointed position as per CISVA guidelines. See www.cisva.bc.ca.

Choral Committee

Assist in the choral program. Involves fundraising, event organization, etc.

Specialized Areas

This will vary depending on the attributes of the participant and the needs of the school. This requires approval from St. Patrick's Regional Education Committee.



Fundraising



Fundraising is an obligation of our community and is essential to help us meet our budgetary needs. At St. Patrick's Regional Secondary School our parents are asked to volunteer for fundraisers.

WALKATHON

All students and staff participate in our yearly Walkathon. Walkathon is our primary fundraiser which contributes approximately \$75,000.00 to our budget. To reach the goal of \$75,000.00 students are asked to seek \$150.00 or more in pledges. Parents are asked to donate their time, energy, and money. Also our staff are asked to help track pledges. To ensure the success of walkathon, teams of parents are required for the following areas:

- Walkathon Committee organizers
- Prize solicitation
- Staging of the event
- Accounting of funds

If you would like to volunteer for a walkathon position please sign up on our website under "Parent Participation Portal."

Tax receipts are issued for monetary donations of \$25.00 or more. All cheques must be made payable to St. Patrick Regional Secondary School. If you wish to participate in Walkathon or any other fundraising venture, please indicate your preference on the Parent Participation Contract, under "C" Fundraising Planning Committee.



Technology

STUDENT NETWORK, INTERNET, AND COMPUTER USE AGREEMENT

Computer technology is integrated in most subject areas at St. Patrick Regional Secondary School as a means of enhancing the educational opportunities available to your child. In addition to the positive educational opportunities that technology provides, there are also some concerns. It is important that you understand the school's policy for computer use and Internet access. All students at our school have access to the Internet, both through school computers, as well as through the school's wireless network (when using their own wireless-enabled devices). Students are instructed as to what is considered appropriate and inappropriate regarding acceptable use of technology as part of the Information Technology 8 course taken by all new grade 8 students. The ethical use of computers is again reinforced throughout IT courses, as well as indirectly complimented by students' ongoing moral formation through Religious Education classes. Should any questions arise regarding acceptable use of technology, students should consult with a teacher for clarification prior to proceeding.

Students' behavior, both in person and online, should be consistent with the moral teachings of the Catholic Church and school guidelines. Online activities such as, but not limited to, gambling, viewing of offensive material, bullying, the destruction or attempted destruction of others' property, and privacy violations, will be treated similarly to such in-person activities according to school policies. Moreover, students should exercise caution in sharing personal information of their own and their peers.

The ethical use of technology is an important aspect of a student's membership of the St. Patrick Regional Secondary School community. Though students are supervised by staff while at school, parents are also expected to inform, monitor and guide their children's Internet use while at home. A partnership therefore exists between students, parents, and the school, in helping students live accordingly with the Church's moral teachings – both in person and online.

PERSONAL ELECTRONIC DEVICES POLICY

Personal Electronic Devices (P.E.D.) have the potential for positive communication and enhanced student learning. Along with these benefits come associated risks and concerns. At St. Patrick Regional Secondary School, P.E.D. must only be used to enhance safety and as a tool to promote student learning and achievement. P.E.D. are limited to authorized educational uses only.

Some prohibited uses of P.E.D. include: academic dishonesty (cheating), interference or disruption of the teaching-learning environment, violations of a person's reasonable expectation of privacy, compromising personal and/or school safety, and any other illegal and/or unethical activities.

Failure to comply with this policy may result in the confiscation of the P.E.D. and/or disciplinary action. The school assumes no responsibility for the loss, stolen, recovery, repair or replacement for any P.E.D. brought onto school property. When unauthorized for use, P.E.D. are to be kept out-of-sight, turned off, and not used within school premises or during school-sanctioned events.



Communicating Student Learning

We are the children of God made in God's Image. We are pilgrims learning and teaching in St. Patrick Regional Secondary School. Together we will work to serve God and our fellow human beings. As in all that we do, our reporting process strives to foster a climate of understanding, caring and learning. This philosophy will be applied so that the students may grow in their totality and will be prepared to accept and live their Christian Commitment to God and the world.

At St. Patrick Regional Secondary School, teachers continuously assess and evaluate students' learning, based on the Learning Standards outlined by the Ministry of Education.

OVERVIEW OF FORMAL REPORTING

Fall Interim Report (October/November): Anecdotal progress report.

Winter Report (January/February): Assessment of learning to date.

Spring Report (March/April): Update on students learning.

June Report and Final Grade: Year-end assessment of student learning

LEARNING LEVELS

EXTENDING	PROFICIENT	DEVELOPING	EMERGING
The learner can perform the learning standards at a near-mastery or mastery level. She/he is perceptive, and her/his work is detailed, extensive, sophisticated, accurate and consistently appropriate.	The learner is meeting the learning standards and has a concrete idea of what he/she needs to do in order to achieve mastery. She/he is thoughtful, and her/his work is coherent and logical, with a considerable degree of accuracy.	The learner is meeting the learning standards and is aware of the curricular elements and skills which he/she must still develop. Her/his work is adequate, with some degree of coherence and logic, and some degree of accuracy.	The learner is meeting the learning standards, but has not yet demonstrated any depth of skills or deeper understanding of content. Her/his work is limited, with a minimal degree of coherence and logic, and limited accuracy.

WORK HABITS

EXCELLENT	GOOD	SATISFACTORY	NEEDS IMPROVEMENT
Responsibility: demonstrates an industrious work ethic, ready to work and learn. Cooperation: exemplifies a high degree of positive and meaningful participation. Independence: enthusiastic learner and continually seeks learning opportunities.	Responsibility: all assignments turned in, ready to work and learn. Cooperation: works well with teachers and other learners, participates in class in a meaningful way. Independence: a self-directed learner, takes appropriate initiative for learning.	Responsibility: most assignments turned in, usually ready to work and learn. Cooperation: usually works well with other learners and teachers. Independence: sometimes requires direction to remain on task.	Responsibility: most assignments are missing, frequently not ready to learn. Cooperation: struggles when working with other learners and teachers. Independence: frequently off task, teacher supervision is required often.



Parent Teacher Conference



St. Patrick Regional Secondary School believes that a student's success is greatly enhanced by creating both formal and informal opportunities to communicate student's progress with parents and guardians. As an important follow-up to the CSL Reports (Communicating Student Learning) you are encouraged to attend our Parent Teacher Conferences.

The students will not attend school on this day. Teachers will be able to elaborate on the CSL Reports and address any questions or concerns you may have. Appointments are made through an online process which will be communicated from our school office throughout the year.



Uniform Policy

Students are expected to wear the school uniform respectfully.

Requirements for Male and Female Students

- Shoes – All black shoes with closed toe. No running shoes please.
- Sweater – St. Patrick school sweater. Mandatory for all Assemblies and Masses.
- Shirt – St. Patrick school polo shirt with emblem. Tucked in please.
- Gym Uniform – St. Patrick school shorts, t-shirt, and appropriate Celtic athletic wear sold through the school’s online store) with appropriate footwear.

Additional Requirements for Female Students

- School Kilt – Expected to be worn with pride and modesty.
- Grey dress pants (sold through the school’s uniform supplier - Optional).
- Leotards/Tights or Knee Socks – Black or Grey colour.

Additional Requirements for Male Students

- Grey Dress Pants.
- Socks – Black or Grey colour.

Summer Uniform Option

The school administration will inform the school community when the summer uniform will be in effect (usually during September, October, May and June).

Summer Uniform Requirements for Male and Female Students

- Shoes – All black or white running shoe only.
- Sweater – St. Patrick’s school sweater. Mandatory for all Assemblies and Masses.
- Shirt – St. Patrick’s school polo shirt with emblem. Tucked in please.
- Socks – Black or white athletic socks.

Additional Summer Uniform Requirements for Female Students

- Skort – Black school skort. To be worn with pride and modesty.

Additional Summer Uniform Requirements for Male Students

- Shorts – Grey shorts.

Special Optional Uniforms and Other Items

- Celtic Athletic Wear.
- The Principal and Regional Education Committee may approve the conditional and short-term use of special optional uniforms by identified school groups such as Peer Counselors, Teams, etc.

Celtic Spirit Days and Non-Uniform School Events

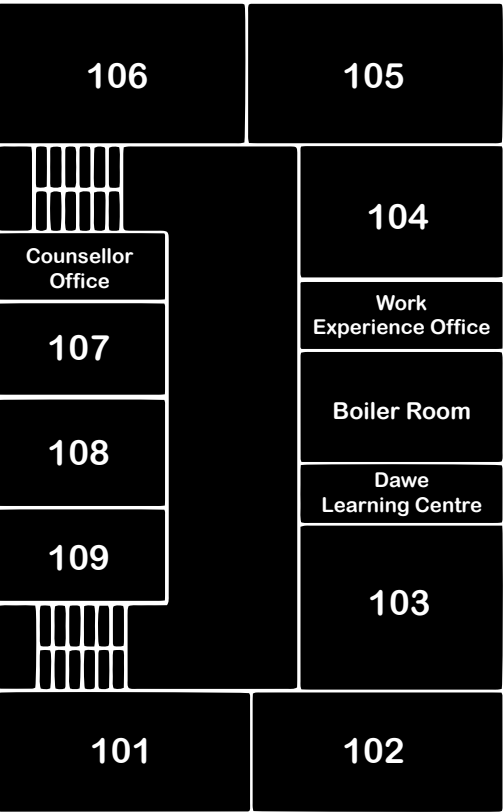
On Celtic Spirit Days, Celtic gear pants or non-uniform pants may be worn with any Celtic Gear; this includes team jerseys or t-shirts, PE Strip, Walkathon hoodies or sweatshirts and any Celtic gear purchased from our online store. Neat, clean and appropriate clothing reflecting the values of St. Patrick School is expected at all times and during all school events.

School uniforms can be purchased at
Top Ten Uniforms
1638 SE Marine Drive, Vancouver
604.322.1626

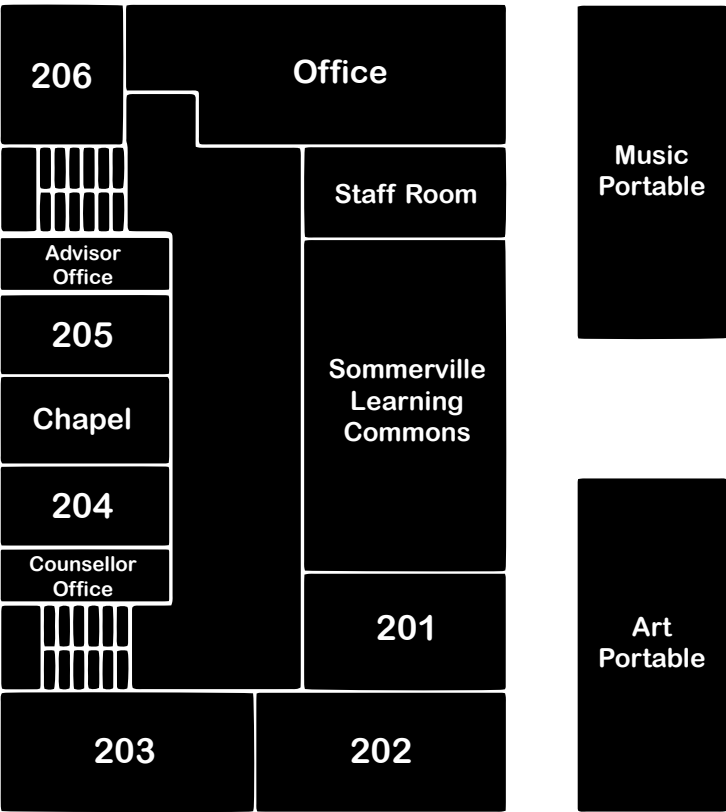


School Map

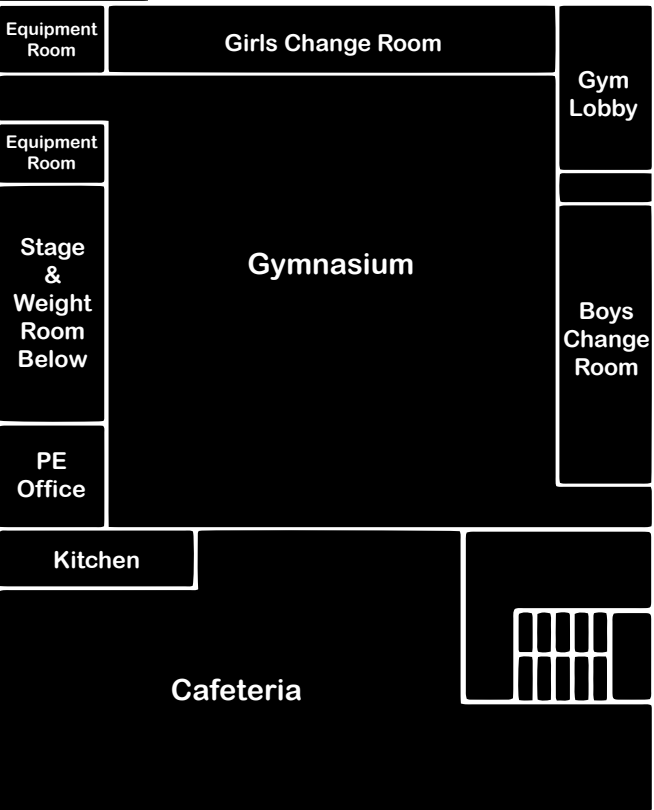
North Campus - Bottom Floor



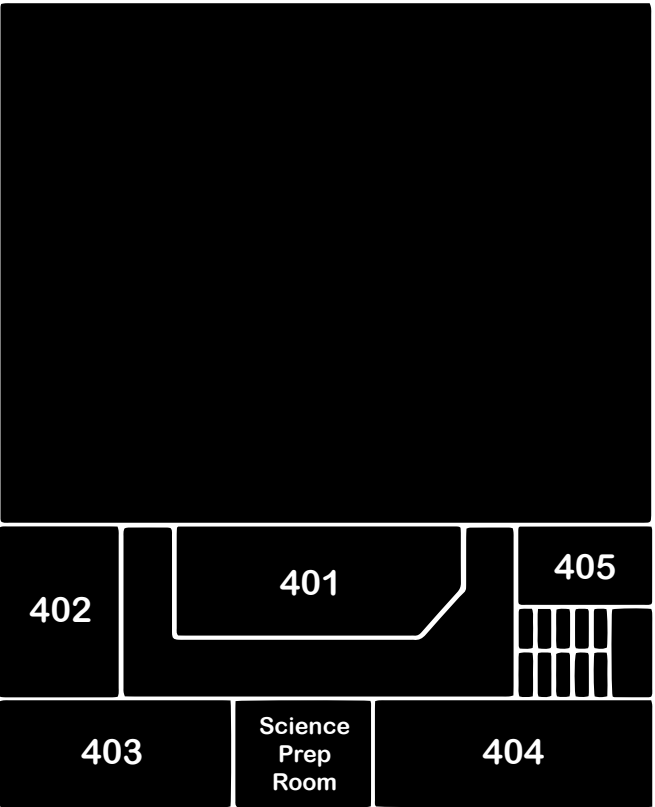
North Campus - Top Floor



303 South Campus - Main Floor



South Campus - Top Floor





About St. Patrick

SAINT PATRICK
APOSTLE OF IRELAND
C. 389 – 461 A.D.



BORN A ROMAN CITIZEN IN BRITAIN
SOLD INTO SLAVERY IN IRELAND
CONVERTED THROUGH PENANCE AND PRAYER
SENT AS A MISSIONARY BISHOP TO THE IRISH
A POWERFUL PREACHER OF THE GOSPEL
A VIGOROUS OPPONENT OF EVIL
A TENDER SHEPHERD WHO LOVED HIS PEOPLE

CHRIST BE WITH ME, CHRIST WITHIN ME, CHRIST BEHIND ME,
CHRIST BEFORE ME, CHRIST BESIDE ME, CHRIST TO WIN ME,
CHRIST TO COMFORT AND RESTORE ME.
(FROM THE BREASTPLATE OF ST. PATRICK)

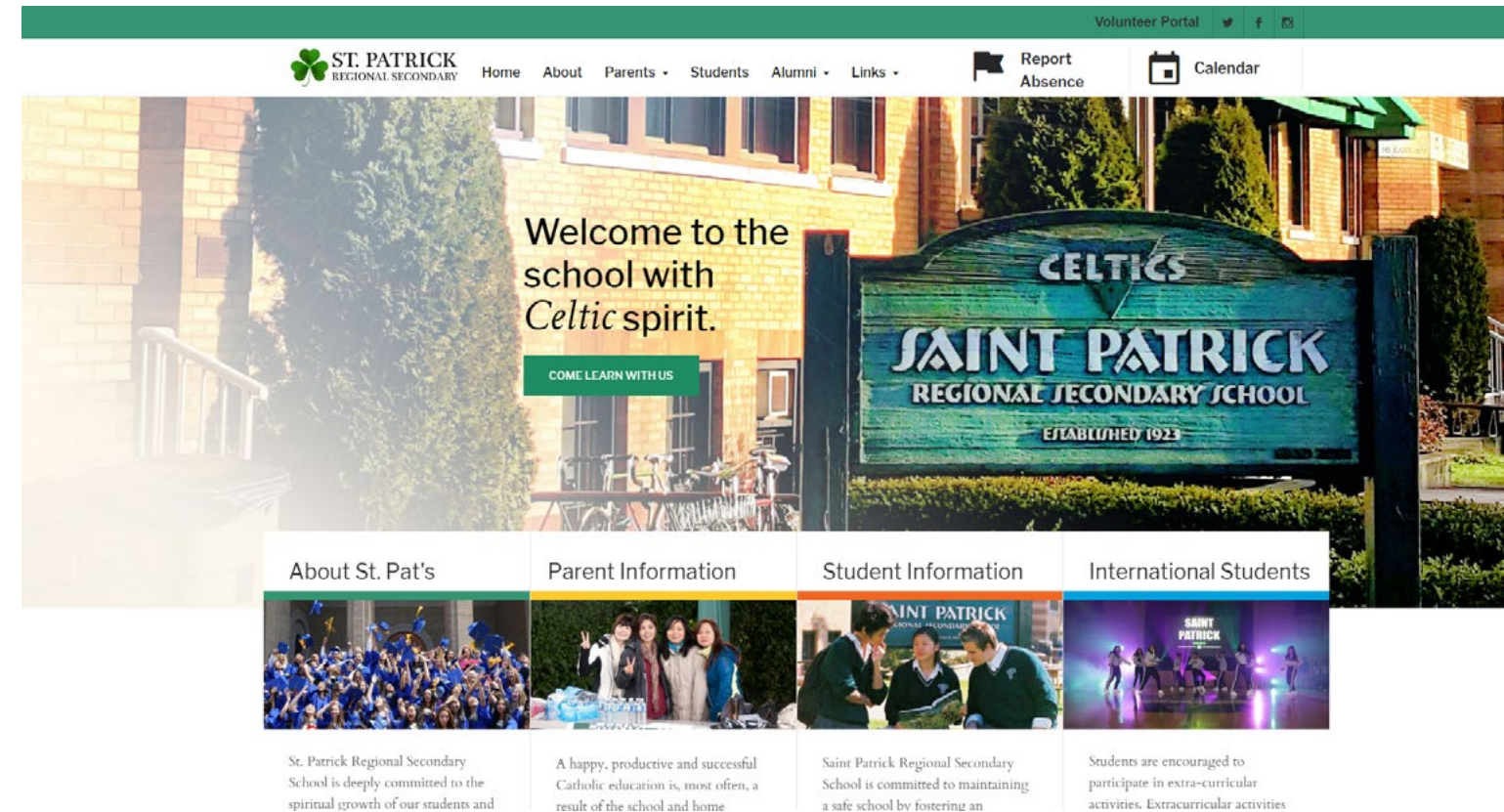
SAINT PATRICK REGIONAL SECONDARY
VANCOUVER, CANADA ESTABLISHED 1923



Connecting With Us

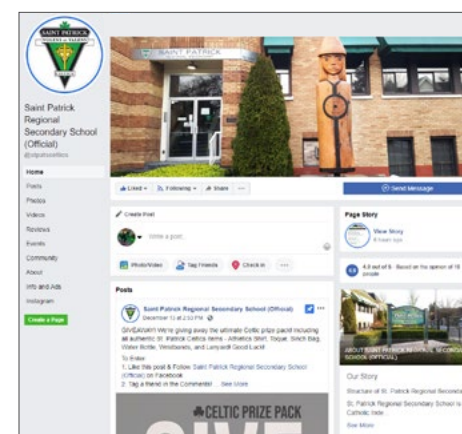
Visit our website for important information including an updated school **calendar**, school **timetable**, daily **announcements**, **program information**, and many other aspects of life at St. Patrick Regional Secondary School.

WWW.STPATS.BC.CA

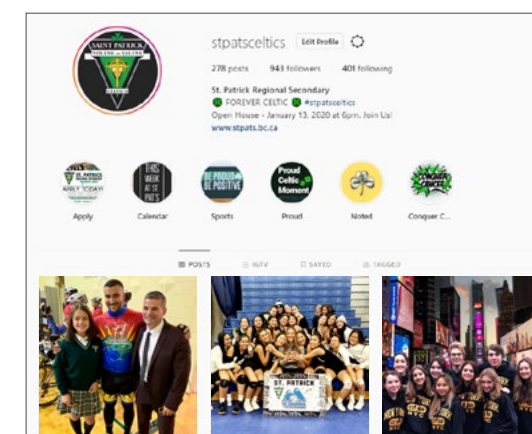


JOIN US ON SOCIAL MEDIA

FACEBOOK
@STPATSCELTICS



INSTAGRAM
@STPATSCELTICS



TWITTER
@STPATSCELTICS



SAINT PATRICK CELTICS



WWW.STPATS.BC.CA

115 EAST 11TH AVENUE VANCOUVER
604.874.6422